

Highlights from GUYS AND DOLLS

(Guys And Dolls • Luck Be A Lady • I've Never Been In Love Before •
A Bushel And A Peck • Follow The Fold • If I Were A Bell • Sit Down You're Rockin' The Boat)

B \flat CLARINET 2

Music by FRANK LOESSER

Arranged by Calvin Custer

Majestically

ff *rit.*

Brightly

[8] "Guys And Dolls"

mf *f*

[16]

[24] "Luck Be A Lady"

Soli *f* *ff*

mf

04001051

(GUYS AND DOLLS • LUCK BE A LADY • I'VE NEVER BEEN IN LOVE BEFORE •
A BUSHEL AND A PECK • FOLLOW THE FOLD • IF I WERE A BELL •
SIT DOWN YOU'RE ROCKIN' THE BOAT)
(From "GUYS AND DOLLS")

By Frank Loesser

© 1950 (Renewed), 1992 FRANK MUSIC CORP.
All Rights Reserved

B \flat CLARINET 2

32



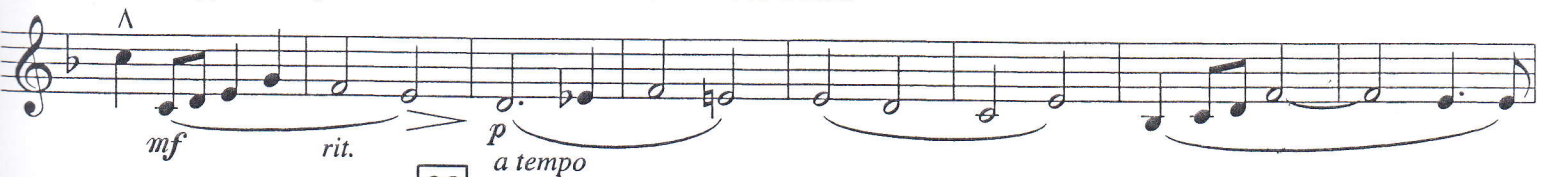
40



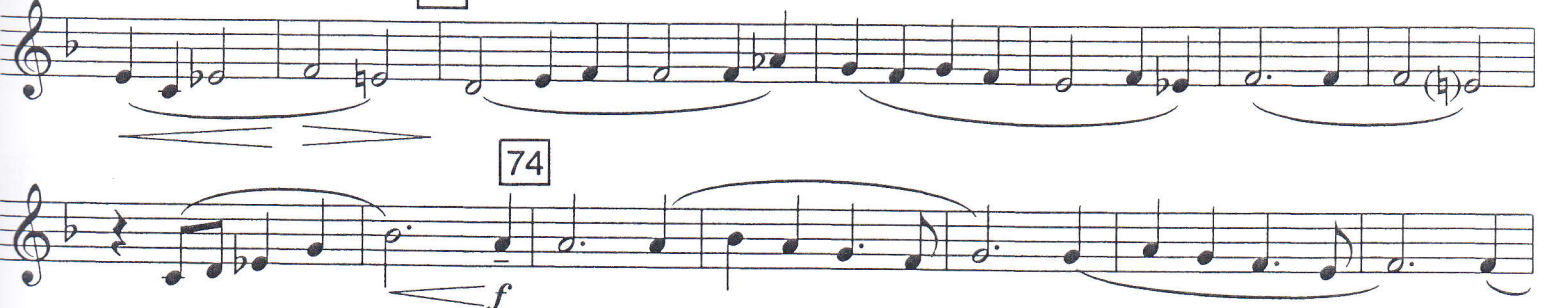
48



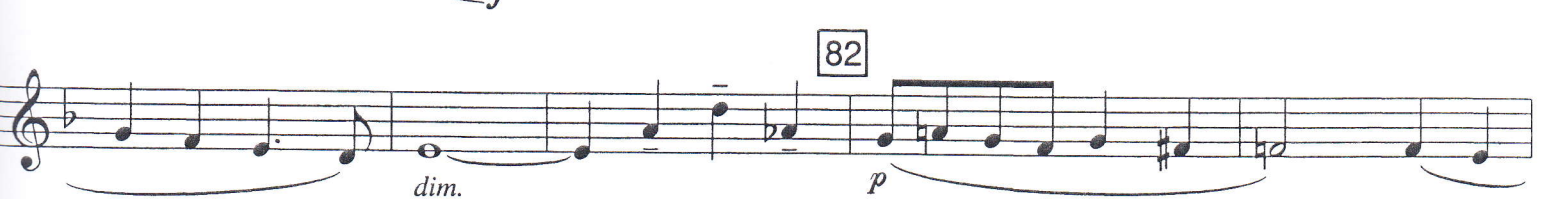
Moderately, with expression "I've Never Been In Love Before"



66



74



82



Brightly

B \flat CLARINET 2

90 "A Bushel And A Peck"

Musical notation for measures 90-97 of "A Bushel And A Peck". The key signature is one sharp (F#). The notation includes various note values, rests, and dynamic markings such as *mf* and *f*. A measure rest for 4 measures is indicated at the end of the section.

98

mf

Musical notation for measures 98-109 of "A Bushel And A Peck". The key signature is one sharp (F#). The notation includes various note values, rests, and dynamic markings such as *mf* and *f*. A measure rest for 4 measures is indicated at the end of the section.

110 Slow March "Follow the Fold"

Musical notation for measures 110-118 of "Follow the Fold". The key signature is one flat (B \flat). The notation includes various note values, rests, and dynamic markings such as *f* and *rit.*. A measure rest for 4 measures is indicated at the end of the section.

Moderate Swing Tempo

Musical notation for measures 119-126 of "Follow the Fold". The key signature is one flat (B \flat). The notation includes various note values, rests, and dynamic markings such as *f* and *rit.*. A measure rest for 2 measures is indicated at the end of the section.

119 "If I Were A Bell"

Musical notation for measures 119-126 of "If I Were A Bell". The key signature is one flat (B \flat). The notation includes various note values, rests, and dynamic markings such as *f* and *rit.*. A measure rest for 2 measures is indicated at the end of the section.

127

Musical notation for measures 127-134 of "If I Were A Bell". The key signature is one flat (B \flat). The notation includes various note values, rests, and dynamic markings such as *f* and *rit.*. A measure rest for 2 measures is indicated at the end of the section.

135

mf

Musical notation for measures 135-142 of "If I Were A Bell". The key signature is one flat (B \flat). The notation includes various note values, rests, and dynamic markings such as *mf* and *rit.*. A measure rest for 2 measures is indicated at the end of the section.

B \flat CLARINET 2

143



cresc.

ff

f

152

"Sit Down You're Rockin' The Boat"



160



rit.

172

Slower



rit.

178



f a tempo

186



192



ff

